

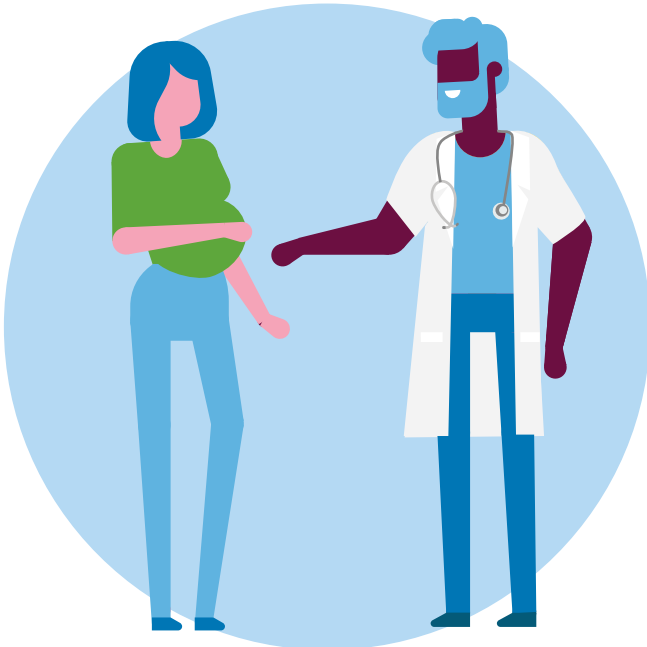


On average, **in one day** Medicaid covers:

Nearly **4,500 births**



First-trimester prenatal care visits for **more than 3,000 women**



Nearly **97,000 children's health screenings**



Dental services for **over 54,000 children**



Modern Medicaid  
ALLIANCE



/ModernMedicaid



/ModernMedicaid



Modern Medicaid Alliance



ModernMedicaid.org

Methodology: The daily statistics provided above came from dividing annual statistics by the number of days in a year. Annual statistics were sourced from the National Center for Health Care Statistics (NCHS), Medicaid and CHIP Payment and Access Commission (MACPAC), and the Centers for Medicare & Medicaid Services (CMS).