



Medicaid's Role in Addressing the Maternal Health Crisis

BY THE NUMBERS



Medicaid covers **more than 40%** of all births in the U.S.

Medicaid provides an essential safety net for **16%** of non-elderly women in the United States, including **40%** of low-income women and **38%** of single mothers.

Medicaid serves a lower income population with greater underlying health risks. Medicaid enrollees have an **82% higher chance** of maternal mortality and morbidity than privately insured women.

Medicaid expansion is strongly associated with **lower maternal mortality**.

States that expanded Medicaid were found to have **lower maternal mortality** by about **7 deaths per 100,000 live births** compared to non-expansion states.

41 states deliver coverage to expansion adults through Medicaid managed care, encompassing the vast majority of this population.

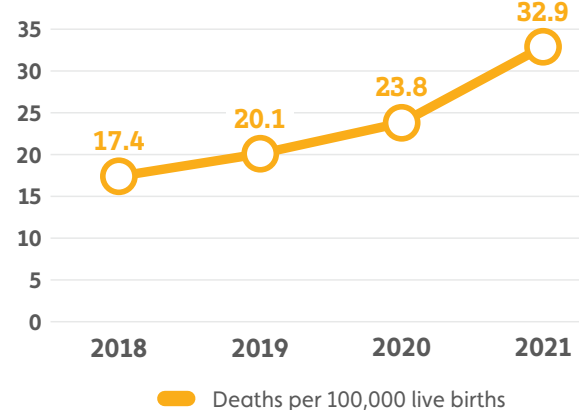


AMERICA'S MATERNAL HEALTH CRISIS

In 2020, the U.S. maternal mortality rate was **more than three times** the rate in most other high-income countries.

Nearly **18%** of pregnancy-related deaths occur between 43 and 365 days after delivery. Most of these deaths (58.3%) were **considered preventable**.

Maternal mortality has **increased significantly** in recent years:

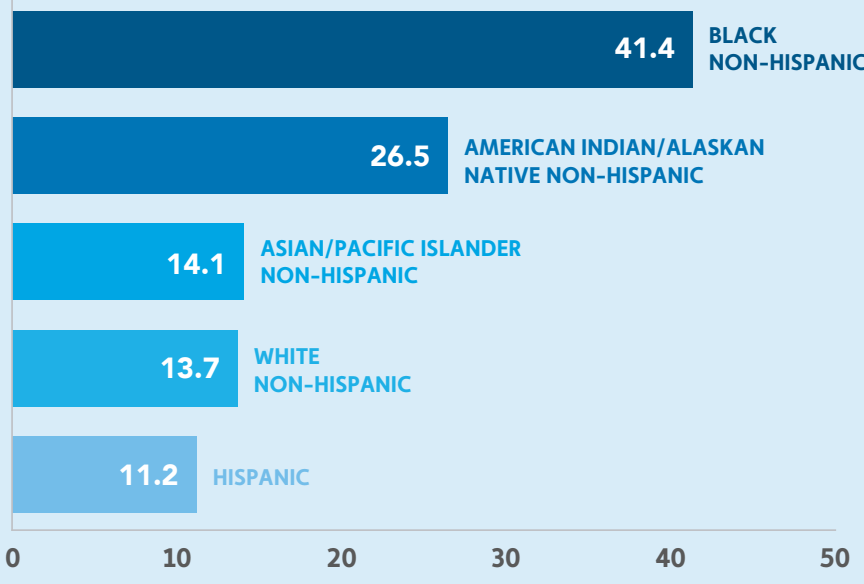


DISPROPORTIONATE IMPACT ON WOMEN OF COLOR



Pregnancy-Related Deaths

Deaths per 100,000 live births



Black women are **3.3 times** more likely and American Indian/Alaska Native women are **2.5 times more likely** to die from pregnancy-related causes, compared to non-Hispanic White women.

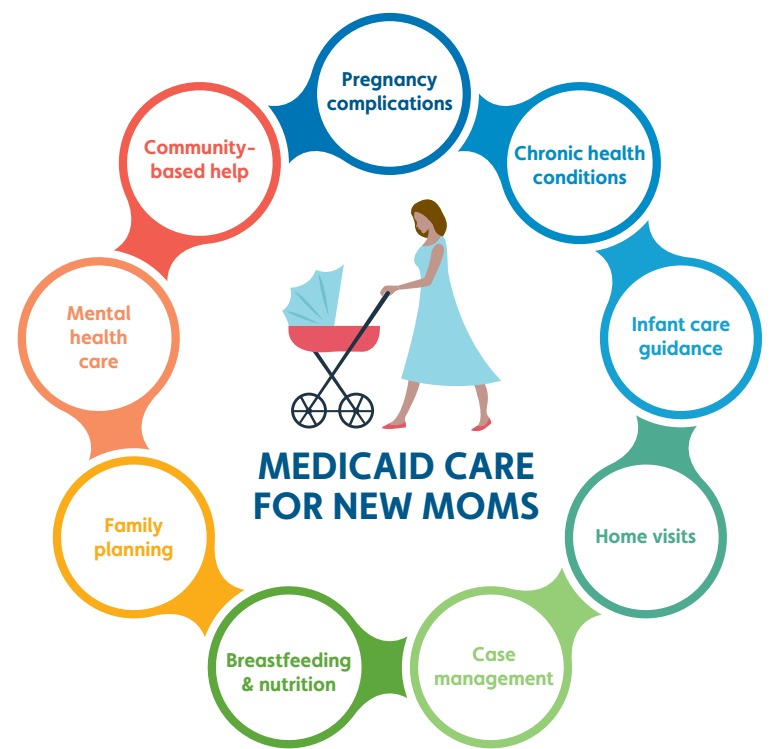
One-third of the pregnant women and new mothers who died in 2020 were Black, though Black Americans make up about 12.4% of the population.

Source: <https://www.kff.org/racial-equity-and-health-policy/issue-brief/racial-disparities-in-maternal-and-infant-health-current-status-and-efforts-to-address-them/>

MEDICAID PROGRAMS

How Medicaid Programs Can Help Address The Maternal Health Crisis

Medicaid delivers high-quality, affordable health care that can support a comprehensive recovery from pregnancy and delivery. Importantly, Medicaid plans also cover mental health conditions, the **second leading cause of mortality** in the postpartum period.



"The Modern Medicaid Alliance and our partners are committed to ensuring that maternity care for all women is safe, guided by sound medical evidence, and affordable. Our partners are focused on improving birth outcomes and are working to reduce and eventually eliminate racial disparities in care. Together, we are working hard to improve health outcomes for all women and to deliver innovative and culturally competent approaches to improve maternity and infant care."

– Modern Medicaid Alliance

Modern Medicaid Alliance Urges States to Adopt Postpartum Coverage Extensions

Medicaid can serve as a lifeline for women during pregnancy. While 30 states have extended Medicaid for 12 months postpartum following the passage of the American Rescue Plan Act of 2021 (ARPA), all 50 states should adopt extensions as a vital approach to addressing America's maternal mortality crisis.



For more information on the Modern Medicaid Alliance, visit ModernMedicaid.org.